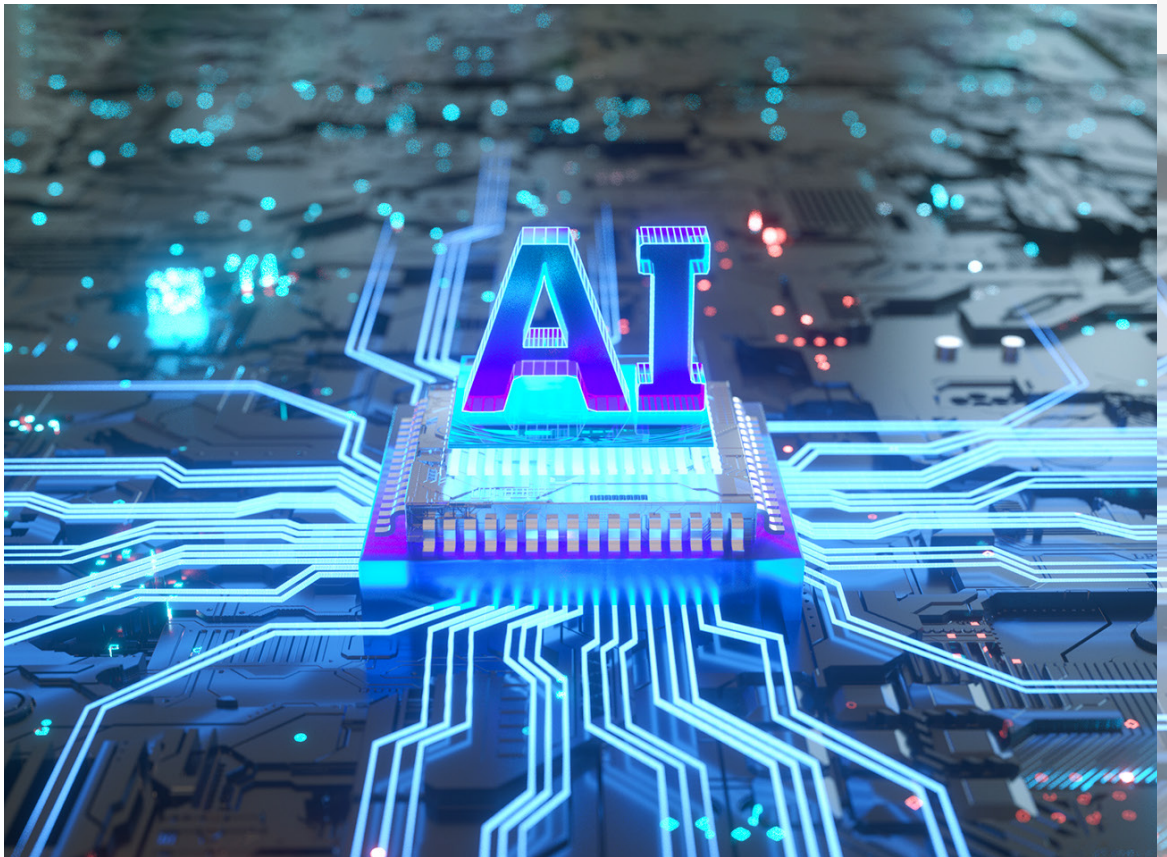


SPONSORED CONTENT | WHITE PAPER

Artificial  
Intelligence

# From buzz to breakthrough: Supercharge your GenAI journey now



## The buzz-to-breakthrough gap

**I**n the relentless march of tech progression, one innovation stands out as the rising star: **Generative AI (GenAI)**. Just as hybrid and remote work models during the pandemic sparked a digital transformation, GenAI is now sweeping across the business world with unprecedented excitement, aligned with broader AI initiatives for growth.

According to [Foundry's 2023 AI Priorities study](#), 72% of leaders are exploring or initiating GenAI projects to enhance experiences and systems, including productivity tools, marketing, sales, and security frameworks. This surge in interest is more than speculative; it heralds a new economic revolution, with one-third of businesses reporting notable revenue increases for its effective use.

Yet, the journey from buzz to breakthrough is in early stages. The real challenge lies in bridging the gap between GenAI's prospects and its tangible impacts. Enterprises must scale, adapt, and ethically deploy GenAI in ways that yield verifiable benefits.

But the path to integration would not be smooth. Nearly a quarter of industry leaders worry their organizations adopting GenAI too

hastily. Rapid deployment risks outstripping the management of seismic GenAI-induced shifts, leading to disparities between expected and realized advantages.

Technical and business complexities also abound. Issues such as data hallucination—where models generate plausible but fictitious responses—are exacerbated by unreliable training data, often internet-sourced.

Regulatory and ethical hurdles, such as data provenance, bias, toxicity, and privacy pose formidable challenges. Furthermore, the scarcity of specialized skills to architect and optimize the tech stack, as well as the high energy demands of GenAI models add more layers of difficulty.

## Navigating challenges to operationalize end-to-end AI

The shift from GenAI's potential to its substantial impact hinges on a deliberate and scalable strategy, moving beyond the confines of isolated pilot projects to a holistic approach on multiple fronts.

This begins by outlining key priorities for deploying GenAI, aligning resources, skills, and budgets through a synergistic collaboration between business and IT teams.

Given the nascent yet fast-evolving nature of GenAI, successful navigation involves partnering with technology service providers who not only understand the intricate GenAI landscape, but also provide the necessary expertise and solutions:

- **Expertise and Continuous Support:** Merging industry-specific knowledge with technical expertise, along with comprehensive support, maintenance and updates.
- **Cost Efficiency:** Collaborative R&D efforts distribute the financial load, making GenAI more accessible and economically viable.
- **Risk Mitigation:** Experienced partners can provide established frameworks that minimize developmental risks and costly pitfalls.
- **Speed and Customization:** Experts have pre-built tools and frameworks for quick customization to meet specific business needs.

Collaboration is crucial in this strategic journey, as evidenced by 58% of IT leaders in **Foundry's 2024 State of the CIO study**, who reported increased teamwork between IT and business lines around the adoption and use of GenAI for tech stacks.

## A strategic collaboration for GenAI deployment

Dell Technologies and LTIMindtree have come together to offer enterprises a way to integrate infrastructure and software platforms to deliver advanced GenAI capabilities seamlessly and efficiently.

This collaboration is designed to harness the strengths of both entities to deliver full-stack GenAI solutions leveraging LTIMindtree's Canvas.ai platform, which is powered by Dell Technology's cutting-edge infrastructure, software and GenAI ecosystem.



Through this partnership, **Dell Technologies brings to the table its validated designs**

**tailored for deploying AI workloads effectively**, ensuring enterprises can swiftly construct GenAI models and hit the ground running.

Meanwhile, LTIMindtree enhances this offering with its ready-to-use platform, vast industry knowledge, specialized consulting and engineering services, ensuring that enterprises benefit from tailored infrastructure optimization and operations.

This means every phase of GenAI implementation—from model training to deployment, finetuning, inferencing and ongoing operations—is smooth and benefits are maximized across business processes. To enable enterprises to rapidly scale their projects, [Canvas.ai](#) stands out as a first-of-its-kind, enterprise-ready, GenAI platform that accelerates the concept-to-value journey.

It is designed to reduce the time and efforts associated with GenAI application concept to production deployment within a remarkably short span of a few days, significantly boosting productivity and cost-efficiency across the board. The platform also ensures effective and ethical management of proprietary and industry-specific data, prioritizing privacy and

security while promoting sustainability.

This partnership is set to ignite a spectrum of process reinvention opportunities across multiple functions, from innovative marketing with content and data creation, streamlined workflows with document automation, cutting-edge customer experiences with digital assistants, advanced search with natural language, and so many more.

This partnership is not merely about technology integration but a strategic alliance that promises a consolidated, streamlined GenAI adoption experience as follows:

- **Streamlined Planning:**  
Leverage best-in-class infrastructure and a full-stack integrated AI suite for better strategic alignment and resource allocation, paving the way for effective execution.
- **Accelerated Solutioning & Deployment:**  
Utilize validated designs to move quickly with GenAI, streamlining deployments and significantly enhancing

time-to-value by converting data into actionable insights.

- **Efficient operations:**  
Ensure responsible AI usage and fair usage with FinOps practices for GenAI, supported by on-premise strategies to minimize operational risks and data loss.
- **Effective Testing & Trusted Frameworks:**  
Drive trust from data and infrastructure with rigorous testing protocols and robust guardrails, ensuring the effectiveness of GenAI applications across diverse operational environments.

# Dell Validated Designs : Infrastructure for Generative AI

## Flexibility of configurations

Accelerate business outcomes  
Move quickly with GenAI

Scale AI with consistency  
Streamline GenAI deployments

Secure, trusted decisions  
Drive trust from data and infrastructure

LTIMindtree's Canvas.ai platform build and rollout GenAI applications

EXPERIENCE

COMPOSABILITY

ENTERPRISE  
APP  
INTEGRATIONS

RAG

MODERATIONS

SEMANTIC  
CACHING

MODEL  
MANAGEMENT

ML OPS

DATA HUB

### INFRASTRUCTURE MANAGEMENT

OpenManage  
OpenManage Power Manager

OneFS

CloudIQ

### DELL TECHNOLOGIES AI AND DATA SCIENCE TOOLS AND FRAMEWORKS

#### KUBERNETES & GPU CLUSTER MANAGEMENT

Provisioning

Cluster Management

Management &  
Monitoring

#### INFRASTRUCTURE OPTIMIZED FOR GENAI

#### ENTERPRISE LINUX

#### COMPUTE



PowerEdge  
XE9680



XE8640



R760xa



GPU

#### STORAGE

Block | File | Object



PowerScale  
F900



ECS / ObjectScale  
EXF900

#### NETWORKING



PowerSwitch  
Z9432F

SERVICES  
Consulting | Deployment | Support | Residency | Education

SUPPORT  
Customization | Models | Configurations



Training



Model  
Customization



Inferencing



Prompt-tuning /  
continuous learning



In conclusion, while the journey from buzz to breakthrough is fraught with challenges, the Dell and LTIMindtree partnership provides a strategic roadmap to move confidently from conceptualization

to real-world application. By focusing on robust infrastructure, skilled expertise, and continuous innovation, Dell and LTIMindtree are setting the gold standard for GenAI implementations in the digital age.

Ready to dive in? [Contact us](#) and discover how the LTIMindtree & Dell Partnership is reshaping Gen AI for enterprises.

© 2024 IDG Communications, Inc.

Sponsors and the sponsors logo are trademarks of LTIMindtree and Dell Technologies, registered across jurisdictions worldwide.

