

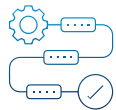
CASE STUDY

**SAP S/4HANA Greenfield
Implementation: Optimizing
Operations for Africa's Largest
Oil and Gas Project**

Client

The Client is a leading Oil and Gas company in the African continent. The company also produces propane, butane, and condensate for affiliated companies.

Key challenges



First digitalization initiative involves transitioning SAP ECC 6.0 to SAP S/4HANA on the SAP RISE Cloud platform Adopt industry best practices "Fit-to-standard" – Adoption of standard SAP processes



Consolidate two business lines into a single SAP instance



Foster synergy between two distinct business entities reduce process complexity by consolidation and harmonization



Standardize asset hierarchies as per ISO Oil & Gas standards



Security compliance with Segregation of Duties (SoD)

LTIMindtree Solution



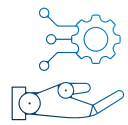
SAP RISE implementation –
Leveraging cutting-edge
technology for integration
(SAP BTP)

Re-engineered more than 140
business processes and their
associated data structures,
achieving seamless integration
of over 36 interfaces



Ensured zero non-compliance
through validated and verified
pre-go-live checks conducted by
SAP and KPMG Harmonization of
asset structure as per ISO Oil &
Gas standards

Automation of manual
processes with Workflows,
DocuSign, Mobility, and
BTP services



Accurate data migration through the implementation of robust cleansing rules and migration procedures



Business Benefits



Improved user experience

- **100%** utilization of operational **958+** Fiori apps
- **20%** faster generation of KPI reports through Analytical Fiori apps



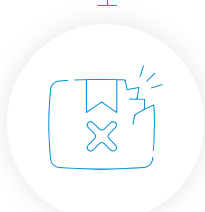
Annual savings of \$1.5 million on AMC across multiple ECC systems. Real-time visibility of Cash Position and Liquidity forecast



Automated secured bank communication



Real-time tracking of shipments from Freight Forwarder



Improved trackability and visibility of damaged and repaired materials/components (Lean services)

Improved refurbishment and calibration process

About LTIMindtree

LTIMindtree is a global technology consulting and digital solutions company that enables enterprises across industries to reimagine business models, accelerate innovation, and maximize growth by harnessing digital technologies. As a digital transformation partner to more than 700 clients, LTIMindtree brings extensive domain and technology expertise to help drive superior competitive differentiation, customer experiences, and business outcomes in a converging world. Powered by 81,000+ talented and entrepreneurial professionals across more than 30 countries, LTIMindtree — a Larsen & Toubro Group company — combines the industry-acclaimed strengths of erstwhile Larsen and Toubro Infotech and Mindtree in solving the most complex business challenges and delivering transformation at scale. For more information, please visit <https://www.ltimindtree.com/>.