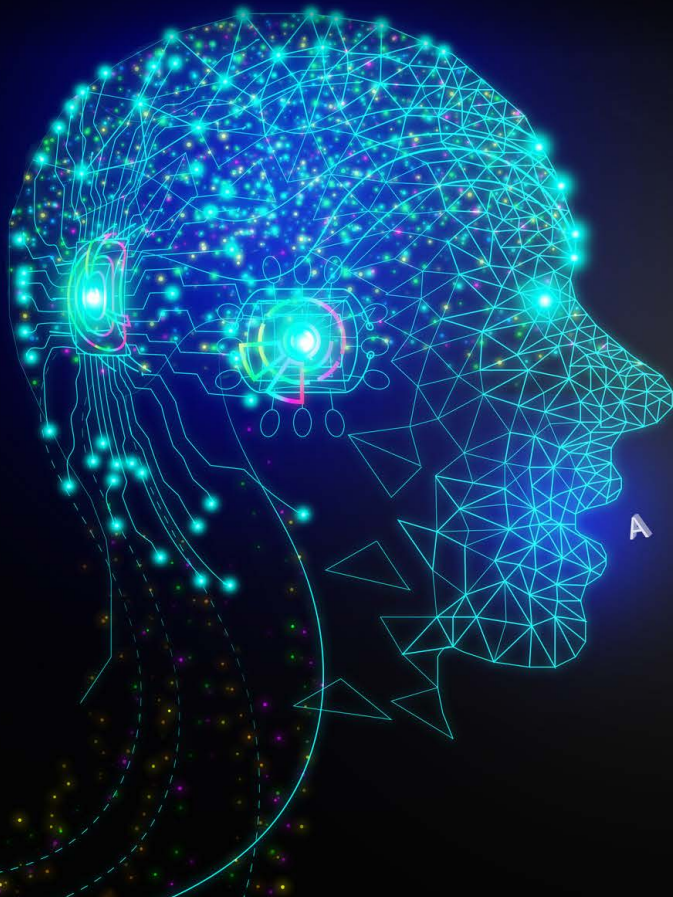


# Enhance Communications with **VoiceGenius**

A Premium Text-to-Speech  
Synthesizer for a More Human-like  
Synthetic Voice Narration





LTIMindtree's VoiceGenius, a text-to-speech (TTS) synthesizer solution, enables a human-like voice narration and listening experience using synthetic voice. It comprises an encapsulation layer over a standard TTS Application Programming Interface (API). It handles nuances of human-like speech delivery with sentiment analysis, imitating natural pauses, and pitch/prosody modulations. Additionally, it excels in handling abbreviations and special pronunciations, all powered by enhanced Speech Synthesis Markup Language (SSML) generated at runtime.

**Several stakeholders within the content supply chain can benefit from using the "VoiceGenius" solution. Here are some examples:**

Individuals who are visually impaired or with learning disabilities experience enhanced listening.

Content planners can listen to content rather than read it, which makes content analysis of textual scripts faster.

Publishing companies can offer enhanced experiences to readers of their newspapers' digital editions.

TTS in the education sector and training organizations helps learners focus on content rather than reading.

Businesses can integrate VoiceGenius with chatbots to enable better engagement.

# Value Proposition

## Accessibility

Access to content via spoken text for the visually impaired

## Enhanced user experience

Narration in a human-like voice with synthetic speech

## Productivity enhancement

Multi-tasking by listening to written text on the go

## Faster time-to-market

Speeding up content script analysis for planners

## Multilingual

support and personalization

The TTS solution from LTIMindtree's VoiceGenius brings human-like nuances to synthetic speech, making it sound more natural. These nuances are based on sentiments, context, and tone handling, generating super-enriched SSMLs incorporating various tags.

## Benefits

Improved accessibility to content and multilingual support

Improved user experience and engagement

Increased productivity and personalization

Easy integrations into various applications, devices, and platforms

## Why LTIMindtree

We bring over a decade of experience serving media and entertainment clients and being a key partner in several of their strategic programs.

We help clients bolster their business innovations through our AI-driven platform "MediaCube."

LTIMindtree's solution combines the best AI-ML techniques for sentiment analysis, content classification, and contextualization. Additionally, it excels at imitating human-like pauses and pronunciations by producing super-enriched SSMLs at runtime.

For more information, Please write to us at [Mediacube@Ltimindtree.com](mailto:Mediacube@Ltimindtree.com).



LTIMindtree is a global technology consulting and digital solutions company that enables enterprises across industries to reimagine business models, accelerate innovation, and maximize growth by harnessing digital technologies. As a digital transformation partner to more than 700 clients, LTIMindtree brings extensive domain and technology expertise to help drive superior competitive differentiation, customer experiences, and business outcomes in a converging world. Powered by 82,000+ talented and entrepreneurial professionals across more than 30 countries, LTIMindtree – a Larsen & Toubro Group company – combines the industry-acclaimed strengths of erstwhile Larsen and Toubro Infotech and Mindtree in solving the most complex business challenges and delivering transformation at scale. For more information, please visit <https://www.ltimindtree.com/>