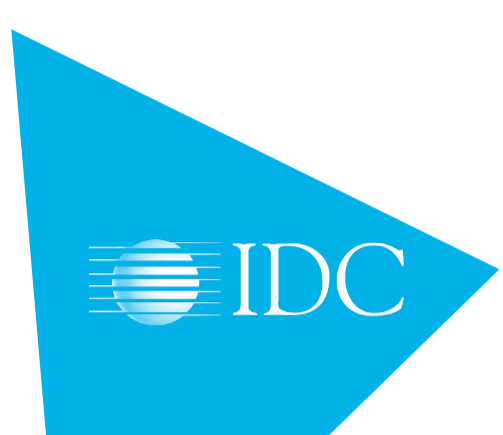


Digital matters

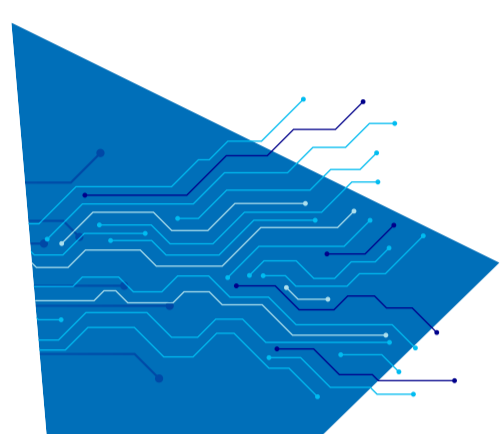


LTI Positioned as a Major Player in IDC MarketScape:

Worldwide Managed Multicloud Services 2021 Vendor Assessment

Our holistic framework to support client needs for managed multi-cloud services that we refer to as Cloud Business Transformation Squared or C=BT², and our Infinity Cloud platform, helped us scale our Cloud game better than ever.

[Know More](#)



Great Restructuring

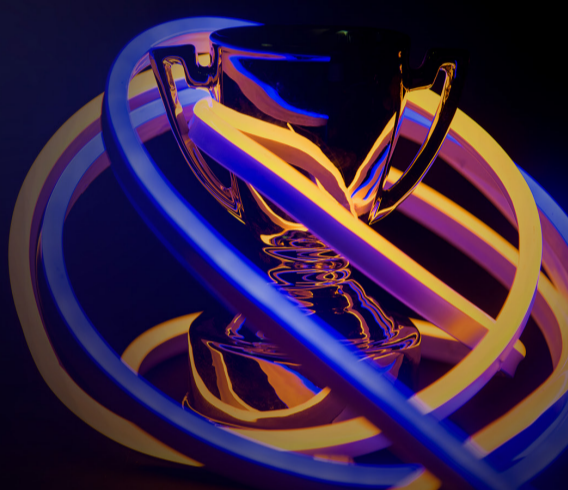
The Reimagined Enterprise

Know how LTI combines digital, domain and design with an outcome-driven mindset to partner with our clients for enterprise reimagination in the era of the Great Restructuring.

[Read more](#)

Trending @LTI

LTI big stories, events, awards & recognition



Scale doesn't scare us, says LTI CEO & MD Sanjay Jalona

[Read More](#)



LTI Recognized as a Leader in the ISG Provider Lens™ Future of Work Quadrant Report

[Register](#)



LTI Becomes Microsoft Azure Expert Managed Services Provider

[Read More](#)



Accelerate your Data-driven Cloud Transformation with Snowcase

[Read More](#)



Why Reimagination

Watch how we help our clients reimagine every aspect of their enterprise through the power of digital technologies in an agile manner to thrive in the era of the Great Restructuring.

[Watch our Video](#)

InfoToon of the Month



It seems my drone has found its community.



LTI (NSE: LTI) is a global technology consulting and digital solutions Company helping more than 460 clients succeed in a converging world. With operations in 33 countries, we go the extra mile for our clients to accelerate their digital transformation with LTI's Mosaic platform enabling their mobile, social, analytics, IoT and cloud journeys. Founded in 1997 as a subsidiary of Larsen & Toubro Limited, our unique heritage gives us unrivalled real-world expertise to solve the most complex challenges of enterprises across all industries. Each day, our team of more than 40,000 LTItes enable our clients to improve the effectiveness of their business and technology operations and deliver value to their customers, employees and shareholders. Find more at <http://www.Lntinfotech.com> or follow us at @LTI_Global.