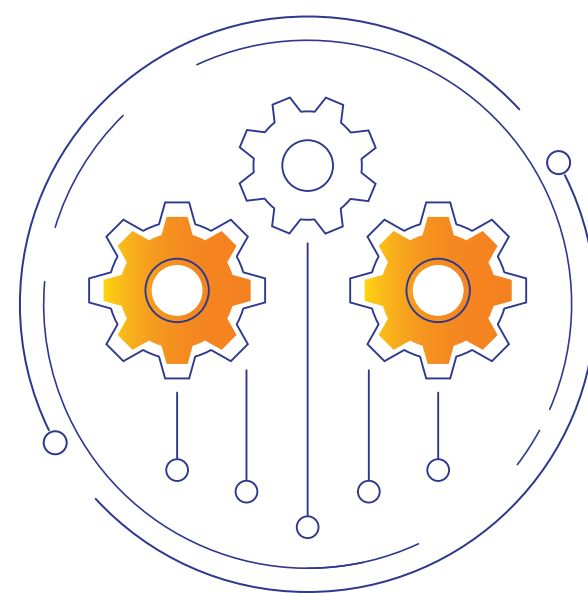


Digital Matters



LTI to Acquire Digital Engineering Firm Cuelogic

Digital engineering capabilities of Cuelogic Technologies combined with their tools and methodologies will help our clients innovate, launch products, accelerate time-to-market, and maintain products optimally.

[Know More](#)

LTI Awarded Snowflake Global Innovation Partner of the Year

[Know More](#)

LTI Expands Strategic Relationship with Amazon Web Services

[Know More](#)

The Exponential View

AWS Cloud Adoption: Real Life Reflections

Leveraging key AWS features such as scalability and reliability, in addition to a robust security framework, organizations can achieve their business goals of cost, security, and availability SLAs.

[Know More](#)

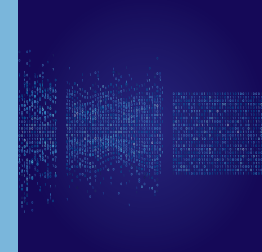
Trending High

LTI big stories, events, awards & recognitions

'Great Restructuring' is the new turning point: Sanjay Jalona



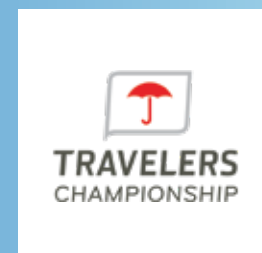
LTI Brings Master Data Management- a SaaS-based solution 100% native to the Salesforce platform.



LTI Initiates Multi-City Vaccination Drive for Employees and their Family Members



LTI is one of the Founding Partners of the Travelers Championship 2021

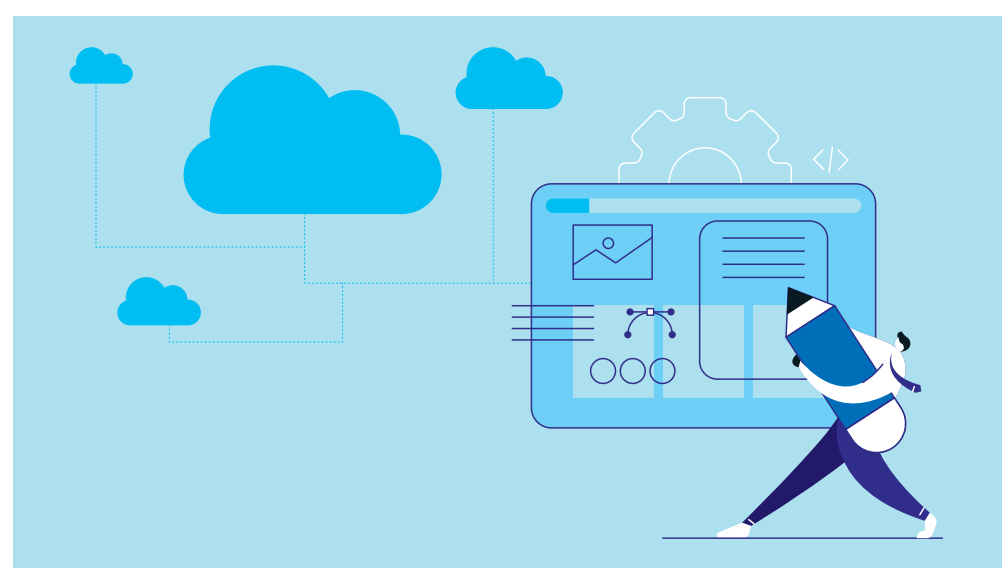


The modern platform enables digital banking operations

with minimal upfront investments
or license costs

Accelerate Your Journey to Cloud

[Watch Now](#)



InfoToon

Data is like people. If you poke enough, the answers will come.

LTI (NSE: LTI) is a global technology consulting and digital solutions Company helping more than 400 clients succeed in a converging world. With operations in 31 countries, we go the extra mile for our clients and accelerate their digital transformation with LTI's Mosaic platform enabling their mobile, social, analytics, IoT and cloud journeys. Founded in 1997 as a subsidiary of Larsen & Toubro Limited, our unique heritage gives us unparalleled real-world expertise to solve the most complex challenges of enterprises across all industries. Each day, our team of more than 35,000 LTItes enable our clients to improve the effectiveness of their business and technology operations and deliver value to their customers, employees and shareholders. Follow us at @LTI_Global